

SQ CORE

TYPE	FIG.	Dimensions(mm)					
		A	B	C	D	E	F
SQ1614	1	16.5±0.5	14.0±0.3	5.0±0.2	4.5±0.2	12.5±0.5	5.0±0.3
SQ1916	1	19.0±0.5	16.0±0.5	5.5±0.2	5.0±0.15	14.0±0.5	6.0±0.5
SQ1918	2	19.0±0.4	18.3±0.4	5.5±0.2	2.5±0.2	14.0±0.3	8.22±0.3
SQ2018	2	20.4±0.4	18.3±0.5	5.5±0.2	3.2±0.2	14.0±0.3	8.22±0.3
SQ2318	1	22.8±0.4	18.1±0.4	5.0±0.3	4.5±0.25	14.8±0.4	9.1±0.4
SQ2418	1	24.0±0.3	17.5±0.4	6.0±0.2	5.5±0.25	20.0±0.3	6.5±0.4
SQ2521	1	24.7±0.5	21.3±0.5	5.2±0.2	4.9±0.2	15.9±0.4	11.5±0.4
SQ2820	1	28.0±0.4	20.0±0.4	6.5±0.2	6.0±0.25	22.0±0.4	8.0±0.4
SQ4319	1	43.0±0.8	19.2±0.4	6.8±0.25	6.1±0.25	33.0±0.6	7.0±0.4

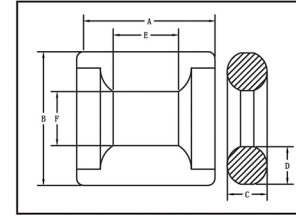
SQ CORE

FIG.1

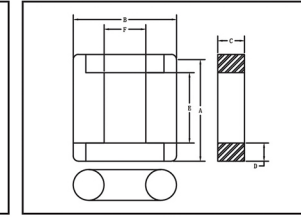


FIG.2

Cl (mm ³)	Ae (mm ²)	Le (mm)	Ve (mm ³)	AL ± 30% (nH/N ²)			Weight g/PCS
				FW7K	FW10K	FW13K	
2.74	14.57	39.91	581.35			5000	3.5
2.46	19.2	47.28	908.26			5600	5.0
2.77	17.34	53.83	933.07		4500		5.5
2.51	21.92	55.15	1209.2			4500	6.0
2.63	22.34	58.59	1309		4600		5.7
2.81	18.75	52.88	991.99		4250		7.3
2.86	24.24	69.25	1678.36		4800		7.4
2.43	27.78	67.57	1877.59			4500	10.1
2.46	39.3	96.88	3808.4			4500	17.0